

Pneumatic Actuator

UPD

Introduction

Double Acting Actuator

Highlights

- Unique and simple design
- Less footprint, less weight and lower maintenance required
- Local position
- Easy mounted to all quarter-turn valves
- Unlimited mounting positions
- For dry mounting conditions
- Other treatment upon request
- Standard: Air (Dry or Lubricated) or inert gases (non-dangerous fluids)
- Options (require rebuilding): Oxygen, Hydraulic oil or water

Material

- Housing: Aluminum Extrusion (Other material on request)
- Shaft: Carbon steel; Stainless steel option
- Left Cover: Aluminum die Casting
- Piston Ring: POM
- Sealing: NBR
- Bolts: Stainless steel

Working Pressure

- 2.5 ~ 10.0 Bar
- Pre-set 7 Bar if without special requirement



Lubricants

RECOMMENDED

- Piston and rack segments: Statoil Moluway LI 712 or similar
- O-rings and plastic parts: Statoil Uniway LIX 42 PA or similar

Working Temperature

- NBR Sealing (standard) : -30°C to 80°C
- Viton Sealing (Option) : -20°C to 175°C

Double acting actuator output torque (Nm) and model

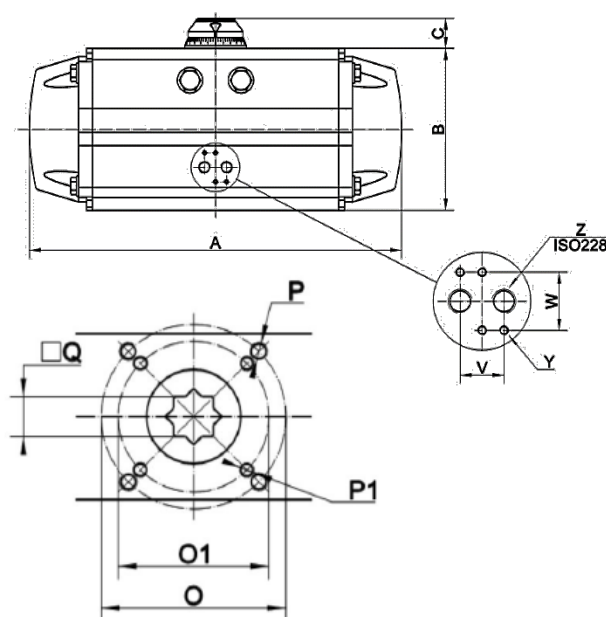
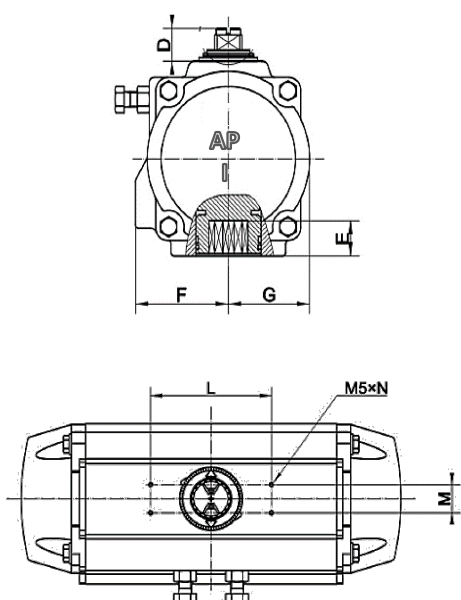
Act. model	Air Pressure / output torque (Nm)									
	2.5bar	3.0bar	3.5bar	4.0bar	4.5bar	5.0bar	5.5bar	6.0bar	7.0bar	8.0bar
UPD042	3.6	4.3	5	5.7	6.4	7.3	8	8.7	10	11.6
UPD050	8.3	10.0	11.6	13.3	15.0	16.6	18.3	19.9	23.3	26.6
UPD063	14.7	17.6	20.5	23.5	26.4	29.3	32.2	35.2	41.0	46.9
UPD075	29.1	34.9	40.7	46.5	52.3	58.2	64.0	69.8	81.4	93.0
UPD088	45.7	54.9	64.0	73.2	82.3	91.5	101	110	128	146
UPD110	66.5	79.7	93.0	106	120	133	146	160	186	213
UPD115	107	129	150	172	193	215	236	258	301	344
UPD125	138	166	194	221	249	277	304	332	387	443
UPD145	217	261	304	348	391	434	478	521	608	695
UPD160	283	340	397	453	510	567	623	680	793	907
UPD190	538	646	753	861	969	107	1185	1292	1508	1723
UPD210	658	789	920	1052	1184	1316	1447	1579	1842	2105
UPD240	966	1160	1352	1546	1740	1933	2126	2320	2706	3093
UPD270	1468	1761	2055	2349	2642	2936	3229	3523	4110	4697
UPD300	1908	2289	2670	3052	3434	3815	4197	4578	5341	6104
UPD350	2856	3427	3998	4570	5141	5712	6283	6854	7997	9139
UPD400	4069	4883	5697	6511	7325	8139	8953	9767	11394	13022

Technical Data

- Rotation: $90^\circ \pm 5$
- Closing direction: Clockwise (Air to close)
- Opening direction: Anti-clockwise (Air to open)
- End stop adjustment: Front Cap
- Male stud coupling: OD6 to OD10
- The UPD actuators are designed for pipe connection to the G1/8 to G1/2 actuator port

Applications

- Fresh water; Sea water; Fuel oil; Chemical and special order
- Dry or submerged installation
- Mounting on horizon or vertical or any position



Double acting actuator output torque (Nm) and model

Model	UPD 063	UPD 075	UPD 088	UPD 100	UPD 115	UPD 125	UPD 145	UPD 160	UPD 190	UPD 210	UPD 240	UPD 270	UPD 300	UPD 350	UPD 400
flange	F03/F05	F05/F07		F07/F10		F10/F12		F12/F14		F16		F16/F25			
A	162	212	248	270	318	345	408	440	530	592	670	723	870	935	1035
B	84	100	115	126	145	157	178	196	233	255	292	332	355	410	466
C	20	23	23	23	23	33	33	33	33	33	33	33	33	33	33
D	19	20	20	20	20	30	30	30	30	30	25	25	25	25	25
E	16	16	19	19	24	24	29	29	38	38	48	48	48	48	48
F	46	52	56	67	78	80	91	100	112	121	130	147	173	195	260
G	36	41.5	49	56	64	71	80	88	105	116	130	147	161	190	260
L	80	80	80	80	80	80	130	130	130	130	130	130	130	130	130
M	30	30	30	30	30	30	30	30	30	30	30	30	30	30	30
N	M5x9														
O	52	70	70	102	102	102	125	140	140	165	165	165	254	254	
P	M6x9	M8x12		M10x15		M12x18		4xM16x24		4xM20x30		M16x24			
O1	36	50	50	70	70	70	102	102	125	125	-	-	-	165	165
P1	M5x8	4-M6x9		M8x12		M10x15		M12x18		-	-	-	M20x30		
Q	14	14	17	17	22	22	27	27	36	36	46	46	46	46	46
V	24	24	24	24	24	24	24	24	24	24	24	40	40	40	40
W	36											45			
Y	M5x9											M6x10			
Z	G1/8"			G1/4"							G3/8"	G1/2"			

Single Acting Actuator

Highlights

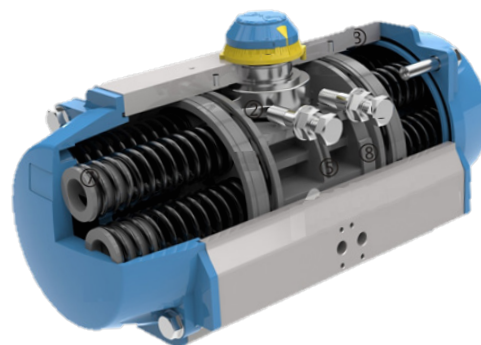
- Unique and simple design
- Less footprint, less weight and lower maintenance required
- Local position
- Easy mounted to all quarter-turn valves
- Unlimited mounting positions
- For dry mounting conditions
- Other treatment upon request
- Standard: Air (Dry or Lubricated) or inert gases (non-dangerous fluids)
- Options (require rebuilding): Oxygen, Hydraulic oil or water

Material

- Housing: Aluminum Extrusion (Other material on request)
- Shaft: Carbon steel; Stainless steel option
- Left Cover: Aluminum die Casting
- Piston Ring: POM
- Sealing: NBR
- Bolts: Stainless steel

Working Pressure

- 2.5 ~ 10.0 Bar
- Pre-set 7 Bar if without special requirement



Lubricants

RECOMMENDED

- Piston and rack segments: Statoil Moluway LI 712 or similar
- O-rings and plastic parts: Statoil Uniway LIX 42 PA or similar

Working Temperature

- NBR Sealing (standard) : -30°C to 80°C
- Viton Sealing (Option) : -20°C to 175°C

Single acting actuator output torque (Nm) and model

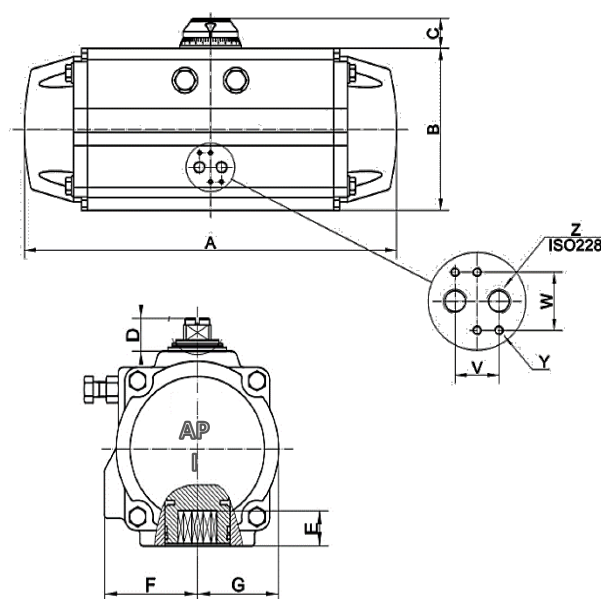
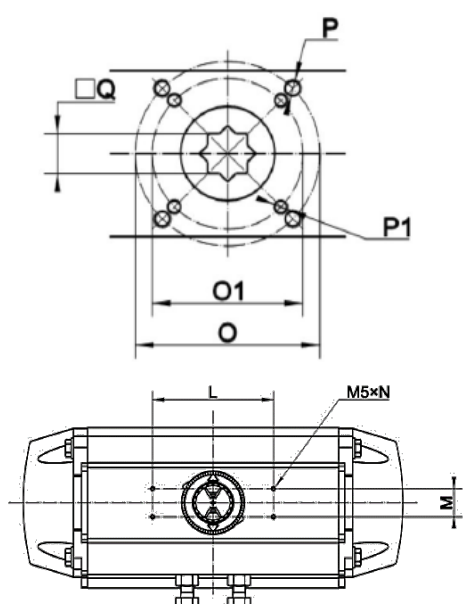
Actuator Model	4.5Bar	5.0Bar	5.5Bar	6.0Bar	7.0Bar	8.0Bar	Spring Torque
UPS073	17.7	23.5	29.3	35.1	46.7	58.4	22.1
UPS088	24.5	33.7	42.8	52	70.2	88.5	36.7
UPS100	40.7	54	67.3	80.5	107	134	50.6
UPS115	62.1	83.6	105	127	170	212	82
UPS125	84	112	140	167	223	327	105
UPS145	133	177	220	263	350	437	165
UPS160	178	235	291	348	461	575	224
UPS190	210	426	535	641	857	1072	379
UPS210	253	517	657	780	1043	1306	521
UPS240	566	745	923	1102	1459	1817	721
UPS270	982	1281	1567	1868	2455	3042	1060
UPS300	1074	1458	1837	2221	2984	3747	1460
UPS350	1362	1929	2503	3071	4212	5356	2346
UPS400	3041	2653	4669	4281	5908	7526	2624

Technical Data

- Rotation: $90^\circ \pm 5$
- Closing direction: Clockwise (Air to close)
- Opening direction: Anti-clockwise (Air to open)
- End stop adjustment: Front Cap
- Male stud coupling: OD6 to OD10
- The UPD actuators are designed for pipe connection to the G1/8 to G1/2 actuator port

Applications

- Fresh water; Sea water; Fuel oil; Chemical and special order
- Dry or submerged installation
- Mounting on horizon or vertical or any position



Double acting actuator output torque (Nm) and model

Model	UPD 063	UPD 075	UPD 088	UPD 100	UPD 115	UPD 125	UPD 145	UPD 160	UPD 190	UPD 210	UPD 240	UPD 270	UPD 300	UPD 350	UPD 400
flange	F03/F05	F05/F07		F07/F10		F10/F12		F12/F14		F16		F16/F25			
A	162	212	248	270	318	345	408	440	530	592	670	723	870	935	1035
B	84	100	115	126	145	157	178	196	233	255	292	332	355	410	466
C	20	23	23	23	23	33	33	33	33	33	33	33	33	33	33
D	19	20	20	20	20	30	30	30	30	30	25	25	25	25	25
E	16	16	19	19	24	24	29	29	38	38	48	48	48	48	48
F	46	52	56	67	78	80	91	100	112	121	130	147	173	195	260
G	36	41.5	49	56	64	71	80	88	105	116	130	147	161	190	260
L	80	80	80	80	80	80	130	130	130	130	130	130	130	130	130
M	30	30	30	30	30	30	30	30	30	30	30	30	30	30	30
N	M5x9														
O	52	70	70	102	102	102	125	140	140	165	165	165	254	254	
P	M6x9	M8x12		M10x15		M12x18		4xM16x24		4xM20x30		M16x24			
O1	36	50	50	70	70	70	102	102	125	125	-	-	-	165	165
P1	M5x8	4-M6x9		M8x12		M10x15		M12x18		-	-	-	M20x30		
Q	14	14	17	17	22	22	27	27	36	36	46	46	46	46	46
V	24	24	24	24	24	24	24	24	24	24	24	40	40	40	40
W	36										45				
Y	M5x9										M6x10				
Z	G1/8"			G1/4"							G3/8"	G1/2"			

Submerged Double Acting Actuator

Highlights

- Unique and simple design
- Less footprint, less weight and lower maintenance required
- Local position
- Easy mounted to all quarter-turn valves
- Unlimited mounting positions
- For submerged mounting conditions
- Other treatment upon request
- Standard: Air (Dry or Lubricated) or inert gases (non-dangerous fluids)
- Options (require rebuilding): Oxygen, Hydraulic oil or water

Material

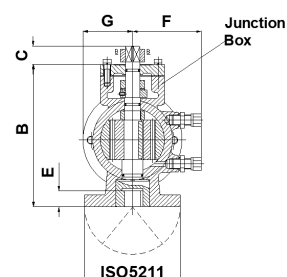
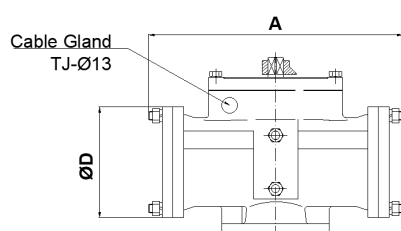
- Housing: Aluminum Bronze (Other material on request)
- Shaft: Stainless steel
- Both Cover: Aluminum Bronze
- Piston Ring: POM
- Sealing: NBR
- Bolts: Stainless steel
- Male stud: Stainless steel
- Cable gland: Stainless Steel

Working Pressure

- 2.5 ~ 10.0 Bar
- Pre-set 7 Bar if without special requirement

Single acting actuator output torque (Nm) and model

Actuator Model	Air Pressure/output torque (Nm)									
	2.5Bar	3.0Bar	3.5Bar	4.0Bar	4.5Bar	5.0Bar	5.5Bar	6.0Bar	7.0Bar	8.0Bar
UPS088	45.7	54.9	64	73.2	82.3	91.5	101	110	128	146
UPS115	107	129	150	172	193	215	236	258	301	344
UPS145	217	261	304	348	391	434	478	521	608	695
UPS190	538	646	753	861	969	107	1185	1292	1508	1723
UPS240	966	1160	1352	1546	1740	1933	2126	2320	2706	3093
UPS300	1908	2289	2670	3052	3434	3815	4197	4578	5341	6104



Lubricants

RECOMMENDED

- Piston and rack segments: Statoil Moluway LI 712 or similar
- O-rings and plastic parts: Statoil Uniway LIX 42 PA or similar

Working Temperature

- NBR Sealing (standard) : -30°C to 80°C
- Viton Sealing (Option) : -20°C to 175°C



With state-of-the-art technology we bring efficiency to our customers

API Marine is a house of competence, where development, design and production processes are united in unique solutions for advanced tank control. Complete liquid cargo control systems can be supplied – from sensors in the tank and operators' stations to the calculation software, all fulfilling IMO requirements. API Marine is certified according to ISO 9001:2015 and our products carry the ATEX PQAN approval.

We want to contribute to our customer's profitability by supplying high quality products, excellent service and state-of-the-art high-tech solutions, where reliability and durability are keywords!

